

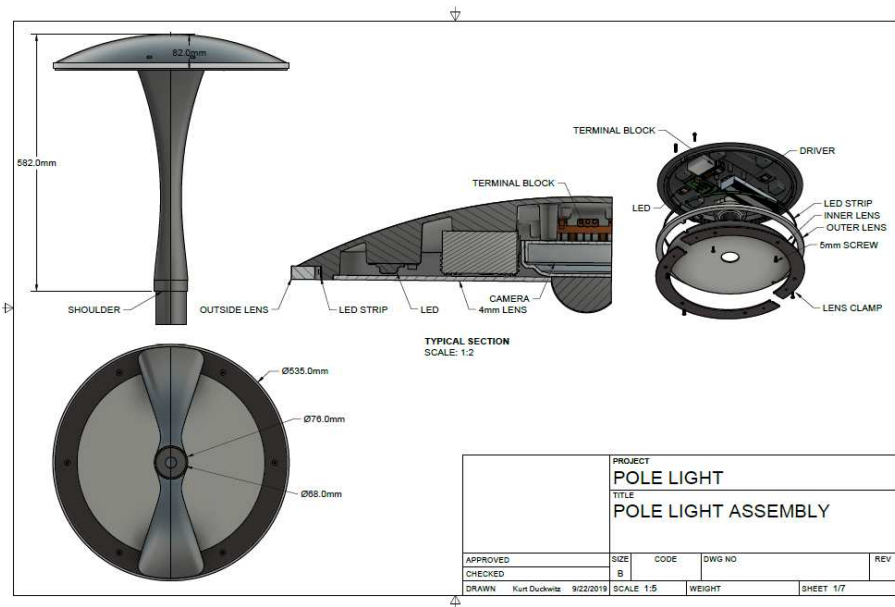


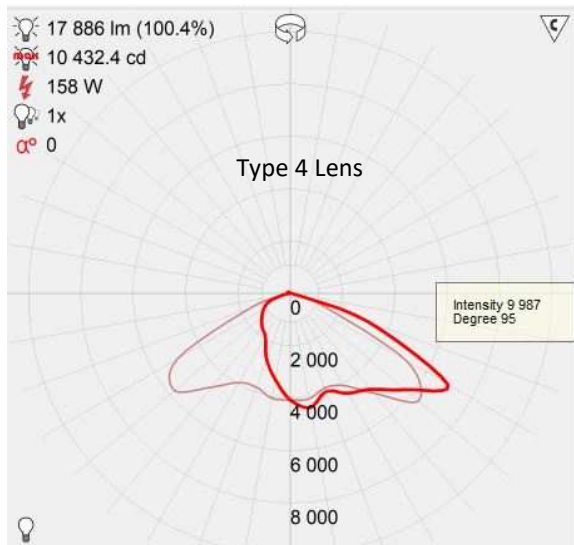
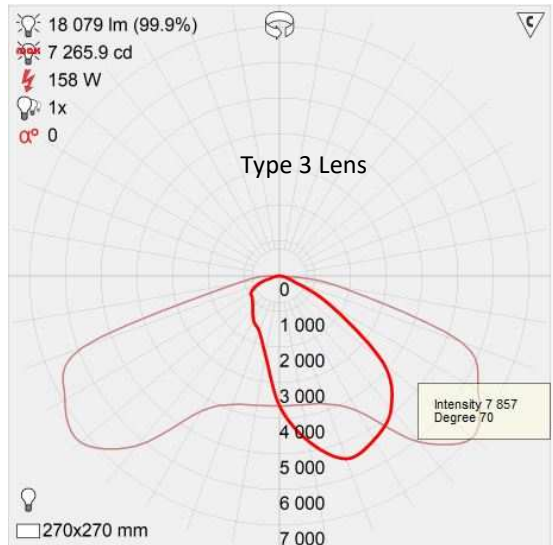
Apollo Smart Poletop – This elegant luminaire for outdoor use combines beauty and function. It was especially designed for pedestrian areas on campuses, in cities, or in parking lots. The robust die cast aluminum housing guarantees excellent heat management, assuring long LED life, and minimal lumen depreciation. Poletop and mast can be powder coated in any RAL color for a seamless design.

- Options Available
 - 100 RGB LEDs in the outside ring can be used for decoration or information purposes
 - 4K ONVIF camera with 5 GHz radio
 - Speaker for PA capabilities
 - Wireless control on UHF and WIFI



Number of LEDs	6
Lumen@4000k	17900
Typical Power Consumption (W)	150





Electrical	
Input Voltage	100-277 V AC, 480 V AC, 48 V DC
Frequency Range	50/60 Hz
Surge Spike Protection	Compliance to EN61000-4-5 6 kV, 10 kV line to ground
Optical	
Light Source	CREE XHP 70-2 (6)
Color Temperature	4000 K – others on request
Custom Design Lens Source	LEDIL
Beam Pattern	Type III, IV, or V, others on request
Environmental	
Operating Temperature	-40 to +85C
Mechanical	
Dimensions	See drawing
Weight	8kg
Material	Aluminum Alloy/Acrylic Ring and Cover
Wind Load	0.0336 m ² = 0.362 sqft
Mounting	68 mm OD

Optional matching mast for a seamless design. Poletop light and mast are available in any RAL color. Height of mast can be 4, 5, or 6 meters.

